

TRUS YOUR POWER

# ECO POWER





**EN.** BESS - Battery Energy Storage System.

**EN.** ECOPOWER powered by CGM is an energy storage system which can operate independently or in combination with solar panels, electricity and generators, it guarantees ZERO noise and emissions during operation.



**EN.** It's easy to use and Plug&Play in the functionalities.

**EN.** The main target is to guarantee high efficiency and optimize critical applications in terms of load, fuel and noise.



-Z



**EN.** No more peaks, wet stacking, black smoke, maintenance.



**EN.** ZERO emissions, ZERO noise, ZERO liquids.



**EN.** Plug&Play with solar panels, mains, generators.



*EN.* UPS functionality response time  
20ms.

*EN.* Rental Design for easy  
transportation and robustness.

*EN.* During HYBRID use: 2 times more  
engine lifetime, 5 times maintenance  
reduction, 50% fuel reduction.

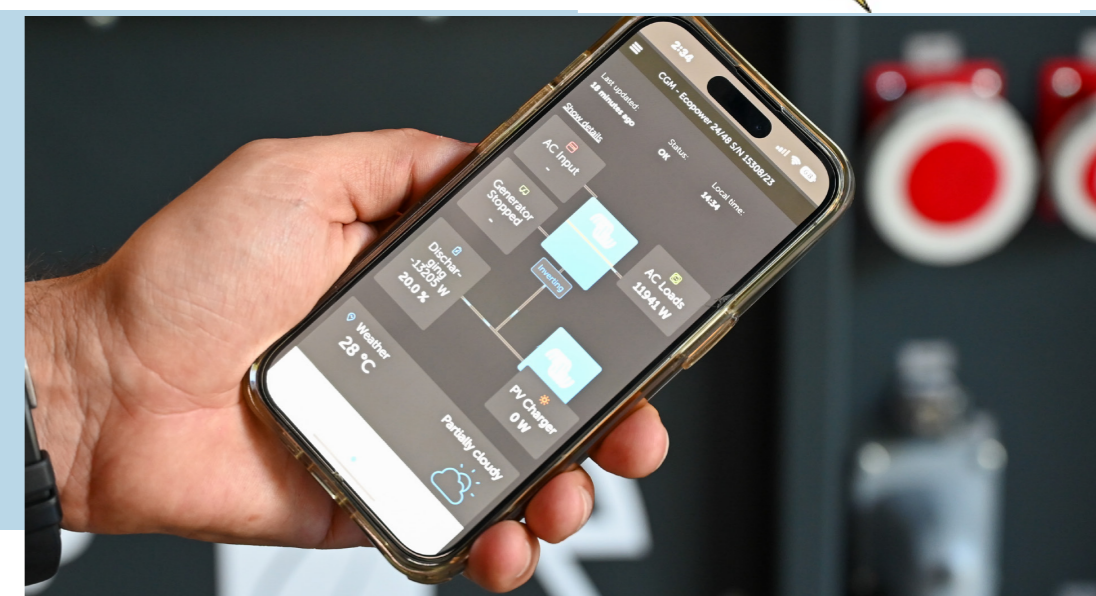
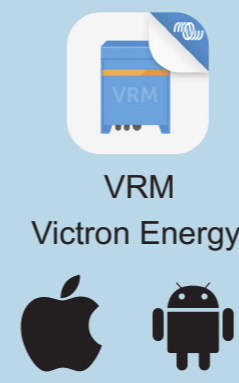
CO POWER



# CHI LO USA?

EN. Construction sites with noise problems.

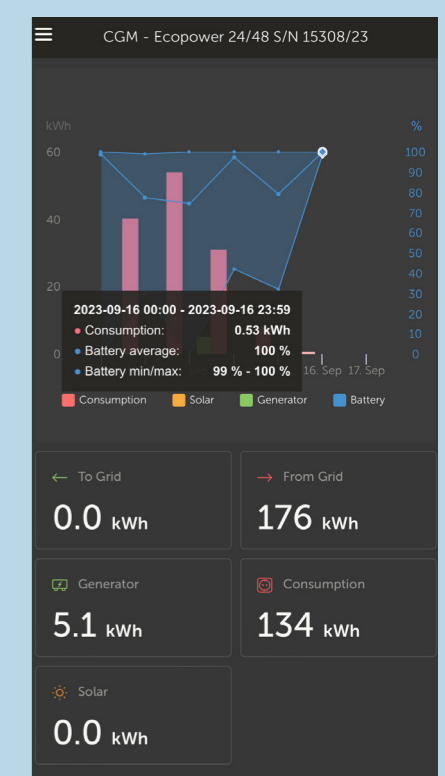
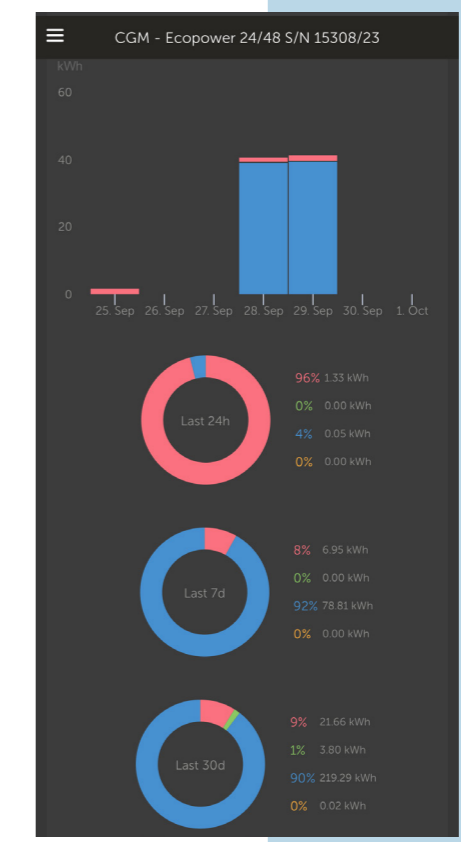
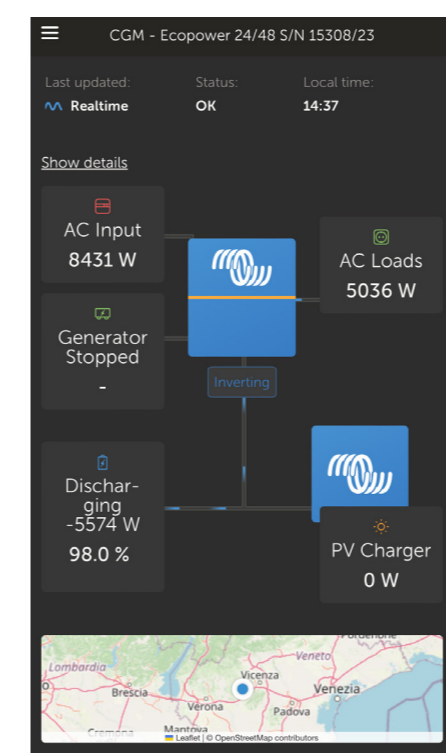
EN. Day rent without using fuel.



# WHO USES IT?

EN. As back up to companies with it's UPS capability.

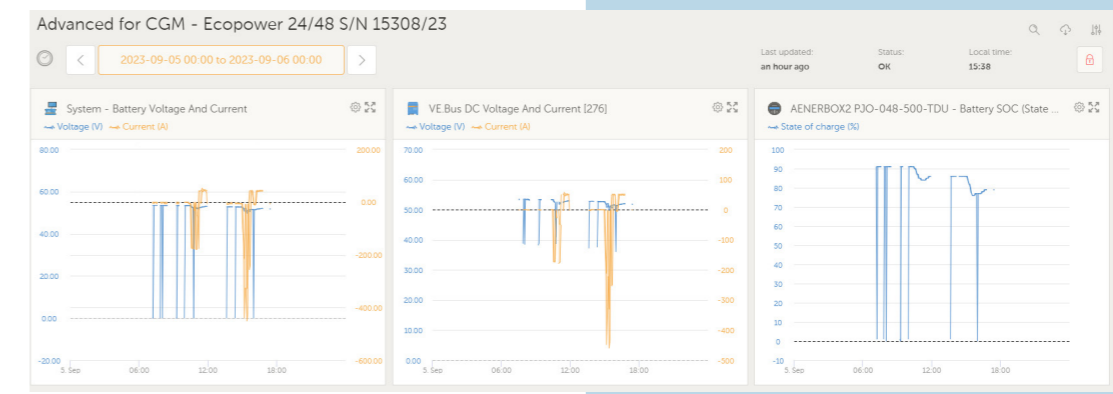
EN. High-end rental companies.



# QUI L'UTILISE?

EN. Net Zero 2030 / carbon neutral companies.

EN. Remote areas (difficult to do maintenance or refill).



## FULL ELECTRIC

model	Nominal power	Storage capacity	Frequency	Voltage	Weight	Dimensions
	[kVA]	[kWh]	[Hz]	[V]	[Kg]	[mm]
EP 24/24	24	24	50	400	875	1650x1180x1900H
EP 24/48	24	48	50	400	1066	1650x1180x1900H
EP 24/96	24	96	50	400	1460	1650x1180x1900H
EP 45/48	45	48	50	400	1150	1650x1180x1900H
EP 45/96	45		50	400	1550	1650x1180x1900H

model	-Battery-			Recharge Time	
	[Type]	[Quantity]	[Cycles @ 90%]	[20-90%]	[20-100%]
EP 24/24	LiNMC	1	6000	1.10Hr	1.25Hr
EP 24/48	LiNMC	2	6000	2.45Hr	3.10Hr
EP 24/96	LiNMC	4	6000	4.30Hr	5Hr
EP 45/48	LiNMC	2	6000	1.1Hr	1.25Hr
EP 45/96	LiNMC	4	6000	2.45Hr	3.10Hr

## HYBRID

model	Nominal power	Storage capacity	Generator Capacity	Engine model	Frequency	Voltage	Weight	Dimensions
	[kVA]	[kWh]	[kVA PRP]	[Stage V]	[Hz]	[V]	[Kg]	[mm]
EPH 24/24/18	24	24	18	Yanmar 4TNV88	50	400	1550	TBD
EPH 24/48/18	24	48	18	Yanmar 4TNV88	50	400	1700	TBD
EPH 24/96/18	24	96	18	Yanmar 4TNV88	50	400	2100	TBD
EPH 45/48/43	45	48	43	Yanmar 4TNV98CT	50	400	2200	TBD
EPH 45/96/43	45	96	43	Yanmar 4TNV98CT	50	400	2700	TBD

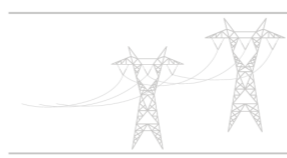
model	-Battery-			Recharge Time	
	[Type]	[Quantity]	[Cycles @ 90%]	[20-90%]	[20-100%]
EPH 24/24/18	LiNMC	1	6000	1.20Hr	1.30Hr
EPH 24/48/18	LiNMC	2	6000	2.30Hr	2.50Hr
EPH 24/96/18	LiNMC	4	6000	5Hr	5.45Hr
EPH 45/48/43	LiNMC	2	6000	1.10Hr	1.20Hr
EPH 45/96/43	LiNMC	4	6000	2.15Hr	2.40Hr



EN. Everage daily load 32%, 11Hr of work, peak 18kVA, everage 8,5kVA

V18Y/V20KH	GIORNO/DAY/JOUR	MESE/MONTH/MOIS	ANNO/YEAR/ANNÉE
<b>H</b>	11 h	230 h	2550 h
<b>L*</b>	44 L = € 80	924 L = € 1.680	10.100L = € 18.300
<b>MAINTENANCE</b>	/	€ 350	€ 3.500
<b>TOT. COST</b>	€ 80	€ 2.030	<b>€ 21.800</b>


1 L = €1.8

EP 24/48 + RETE/MAINS/RÉSEAU	GIORNO/DAY/JOUR	MESE/MONTH/MOIS	ANNO/YEAR/ANNÉE
<b>H</b>	11 h	230 h	2550 h
	88 kWh = € 11	1.840 kWh = € 221	20.400 kWh = € 2.450
<b>MAINTENANCE</b>	0	0	0
<b>TOT. COST</b>	€ 11	€ 221	<b>€ 2.450</b>

1 kWh = €0,12

EP 24/48 + V18Y o - EPH 24/48/18	GIORNO/DAY/JOUR	MESE/MONTH/MOIS	ANNO/YEAR/ANNÉE
<b>H</b>	11 h	230 h	2550 h
<b>L*</b>	26 L = € 47	550 L = € 980	6.000L = € 10.800
<b>MAINTENANCE</b>	€ 0	€ 0	€ 350
<b>TOT. COST</b>	€ 47	€ 980	<b>€ 11.150</b>

1 L = €1.8

EP 24/48 + SOLARE/SOLAR/SOLAIRE	GIORNO/DAY/JOUR	MESE/MONTH/MOIS	ANNO/YEAR/ANNÉE
<b>H</b>	11 h	230 h	2550 h
	88 kWh = € 0	1.840 kWh = € 0	20.400 kWh = € 0
<b>MAINTENANCE</b>	0	0	0
<b>TOT. COST</b>	€ 0	€ 0	<b>€ 0</b>



**Greenpower AB**

Helsingborgsvägen Varalöv,  
262 96 Ängelholm, Sweden

Phone: +46 43122240

Email: [info@greenpower.se](mailto:info@greenpower.se)

Web: [www.greenpower.se](http://www.greenpower.se)